



User Guide for Level 2

This document will explain more about the program details and courses of the proficiency Level 2 and how to subscribe to the ILAE Academy Level 2 package.

For any questions or technical issues, please contact the ILAE Academy team at ilaeademy@ilae.org

If you are a registered ILAE Academy user **and** received your Level 1 certificate already, you will see a new **Level 2** tab in the top navigation of the ILAE Academy after login. Here you will find detailed program information and the link to the store to purchase the Level 2 package.



If you are a new to the ILAE Academy and self-paced learning programs and want to know how to become eligible for and subscribe to Level 2, please see the following frequently asked questions & answers:

1. Why do I not see nor find the ILAE Level 2 tab for the ILAE Academy?
2. What is the self-assessment exam?
3. How do I get the self-assessment exam?
4. What can I expect from Level 2 e-learning courses?
5. How do I get my credits and how many credits do I need to complete Level 2?
6. How do I complete Level 2 and what comes next?

1. Why do I not see nor find the Level 2 tab for the ILAE Academy?

The ILAE Level 2 tab on the top navigation bar is not made visible by default. Visibility is only for those ILAE Academy registrants who have demonstrated sufficient knowledge and competency in epileptology to ensure success in the learning activities contained in Level 2. This is accomplished by either completing the Level 1 course program and receiving the Level 1 certificate **or** having successfully passed the self-assessment exam (see #2). Such accomplishments will be listed in the learner history 'Record of Learning'. If you have fulfilled these criteria and cannot see the Level 2 tab, please send your documents (Level 1 Certificate or Self-Assessment Evaluation) to the ILAE Academy team at ilaeademy@ilae.org

2. What is the self-assessment exam?

Learners who have not completed the Level 1 program and received a Level 1 certificate must demonstrate sufficient knowledge and competency in epileptology to ensure success in the learning activities contained in Level 2. Accordingly, these candidates must take the confidence-based self-assessment exam comprised of 30 questions that cover the domains of Diagnosis, Counseling, Treatment and Emergencies in epileptology. Candidates will respond to each question and also state their level of

confidence of their response. Both numbers contribute to the final score necessary to pass the test. The self-assessment score is calculated as follows:

Calculation of score:	Low confidence	Medium confidence	High confidence
Answer correct	1 point	2 points	3 points
Answer wrong	0 point	-2 points	-6 points

Answering all questions correctly but without confidence is **not sufficient** to pass the self-assessment exam. Test results will highlight performance in various competency domains. The aim is to help learners to better prepare for the re-test, and to highlight critical areas that require strengthening even if a pass mark was marginally obtained.

3. How do I get the self-assessment exam and its results?

Please proceed and order the exam from the Catalog & Store. Subscription period is 3 months.

Please be aware that it will take up to 1 week to assess your results. You will be notified about your results by email. If you have successfully passed this self-assessment, you will be eligible for Level 2 and you will get access to the ILAE Level 2 in your ILAE Academy account. You can then proceed to purchase your Level 2 subscription (valid for 1 year).

4. What can I expect from Level 2 e-learning courses?

The concept of Level 2 is similar to that of Level 1, i.e., a patient-centered educational approach, which addresses adult learning styles and needs in a global environment with different socio-cultural contexts and online access to educational activities. Learning activities will be of practical relevance, goal-oriented and outcome-based, and the learner's readiness and motivation to learn is fostered by actively performing specific tasks. In addition, we have implemented the concept of adaptive e-learning to address knowledge-based content which is difficult to provide by presentations of single cases.

A hallmark of the instructional design of Level 2 learning activities is the combination of self-directed online learning with tutored teaching courses, i.e., a blended learning approach. To accomplish the learning goals of Level 2 and finally being promoted to Level 3, the highest expert proficiency level of the ILAE's educational curriculum, we offer a series of online live events or face-to-face teaching at specified ILAE curricular summer schools, ILAE endorsed teaching courses, or at ILAE congresses.

To help learners navigate the growing and changing corpus of teaching materials, the learning path is conceptualized into a **common trunk** of teaching materials and additional opportunities in specific domains. Courses in the common trunk are compulsory for all learners in Level 2 in order to be promoted to Level 3. Nonetheless, successful completion of all materials in the common trunk is not sufficient to reach Level 3, and learners must choose additional training in **specific learning domains**, addressing seizure semiology, neurophysiology, neuroimaging, ASM treatment, or comorbidities. Learners with a full subscription to Level 2 of the ILAE Academy will have access to all the teaching materials described above.

Level 2

Common Trunk

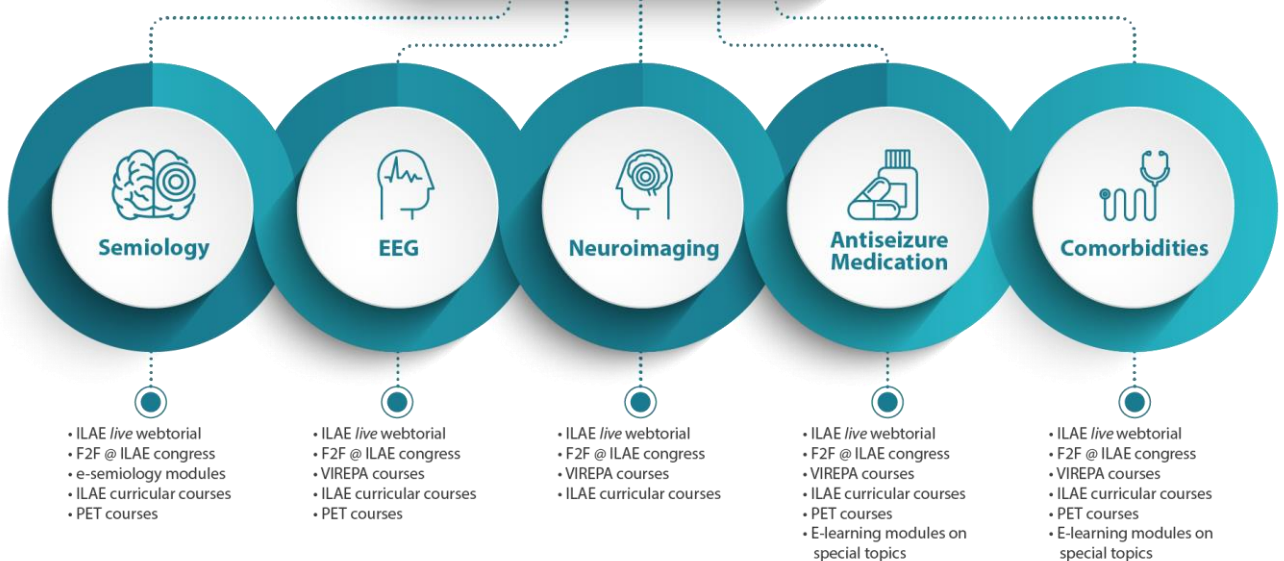
Case-base e-learning modules (L1 & L2), 50 ebrain sessions
 MRI e-learning tool, Histopathology tutorials (L1 & L2)
 EpiCare case-based e-learning on rare diseases
 Pre-selected tutorials/webcasts, review articles in epileptology

Domain-related Learning



Level 2

Domain-related Learning



5. How do I get my credits and how many credits do I need to complete Level 2?

Selected Level 1 and Level 2 courses provide Continuing Medical Education *AMA PRA Category 1 Credits™* for your professional career development in epileptology. Successful completion of the Level 1 ‘Learn from Cases’ courses will provide 37.5 CME credits.

At Level 2, case-based e-learning courses, adaptive e-learning modules, the Epilepsy Neuroimaging online course and the VIREPA tutored online courses will also carry CME credits. All other courses of the ILAE Academy learning platform will provide CME-equivalent ILAE credits to help you reach the necessary credits for the proficiency level 2 of the ILAE curriculum and become eligible for advanced proficiency Level 3.

You will need a total of **200 credits** to reach this goal: 100 credits obtained from the self-paced non-tutored online course program and 100 credits from the blended learning program of selected f2f courses at summer schools, congresses, tutored online live webtorials or any other ILAE endorsed teaching activity with CME accreditation. Follow [this link to the course portfolio overview](#) highlighting the CME or ILAE credits available for each teaching activity.

6. How do I complete Level 2 and what comes next?

You will need a total of 200 credits to become eligible for Level 3, the advanced proficiency level of epileptology. At least 100 credits need to be obtained from the self-paced non-tutored online course program and 100 credits from the blended learning program of selected f2f courses at summer schools and congresses or tutored online live webtorials.

The ILAE Education Council is currently developing the teaching program for Level 3. It is likely that an applicant for Level 3 has to pass an oral exam offered at an international or regional ILAE congress. At Level 3, you will be able to specialize into specific branches including epilepsy surgery, neurogenetics, design and performance of clinical trials, epilepsy in neonates, and so forth. The course material will cover those learning objectives not yet presented at Level 1 nor 2 and at high granularity in these distinguished topics of epileptology. However, these themes are not yet confirmed and may change during the course of further development.